



ANATARA
LIFESCIENCES

Corporate Fact Sheet

Anatara Lifesciences (ASX: ANR) **April 2022**

Anatara Lifesciences is developing and commercialising innovative, evidence-based products for gastrointestinal health where there is significant unmet need

Fast Facts

ASX Code: ANR

Market Capitalisation¹: \$6.7 million

Share Price¹: \$0.094

Current Cash²: \$2.56 Million

Ordinary Shares: 71,355,621 **Options:** 5,377,704

Performance Rights: 0

Board of Directors:

Dr David Brookes, Chairman

Sue MacLeman

Dr Jane Ryan

Management:

Steve Lydeamore, CEO

Simon Erskine, CDO

Michael Pryor, Head of BD & Mkt Comms

Product Development Advisory Board:

Dr Rebecca Burgell

Laureate Prof Nick Talley

Prof Jane Andrews

Prof Barry Campbell

Prof Simon Keely

Dr Tracey Brown

Drug Safety Monitoring Board:

Prof Peter Gibson (DSMB)

Dr Jakob Begun (DSMB)

Prof Paul Rolan (DSMB)

Corporate Highlights

- Strong initial human gastrointestinal health product - Gastrointestinal ReProgramming (GaRP) and 3FDC complementary medicines
- GaRP will target the significant unmet market need for complementary medicines in gastrointestinal health
- 3FDC will target the significant unmet market need for complementary medicines in depression, anxiety and stress
- Successful GaRP proof of concept studies using industry-standard *in vitro* gut models and a murine colitis model
- GaRP and 3FDC clinical trials commenced in August 2021 and February 2022 respectively
- Detach®, approved for use in piglets by Australian Pesticides and Veterinary Medicines Authority (APVMA) is a natural, safe, non-antibiotic product that aids in the control of diarrhoea (known as scour) in livestock.
- New bromelain-based formulation for piglets (in-feed) challenge trial successfully completed
- Poultry challenge trial successfully completed



**One Product
Multiple Benefits**

¹ As at 1 April 2022;
² As at 30 December 2021



Introducing Gastrointestinal ReProgramming (GaRP) Complementary Medicine

Anatara's **Gastrointestinal ReProgramming (GaRP)** complementary medicine is a proprietary formulation that combines bromelain with other evidence-based ingredients to address the primary underlying factors associated with **human gastrointestinal conditions** such as irritable bowel syndrome (IBS) and inflammatory bowel disease (IBD): **microbiome dysbiosis, inflammation and mucosal damage.**

Designed to be used as a sole therapy or as an adjunct therapy in combination with current IBD and IBS prescription medications, GaRP is a complementary medicine that will empower patients to better manage their chronic conditions.



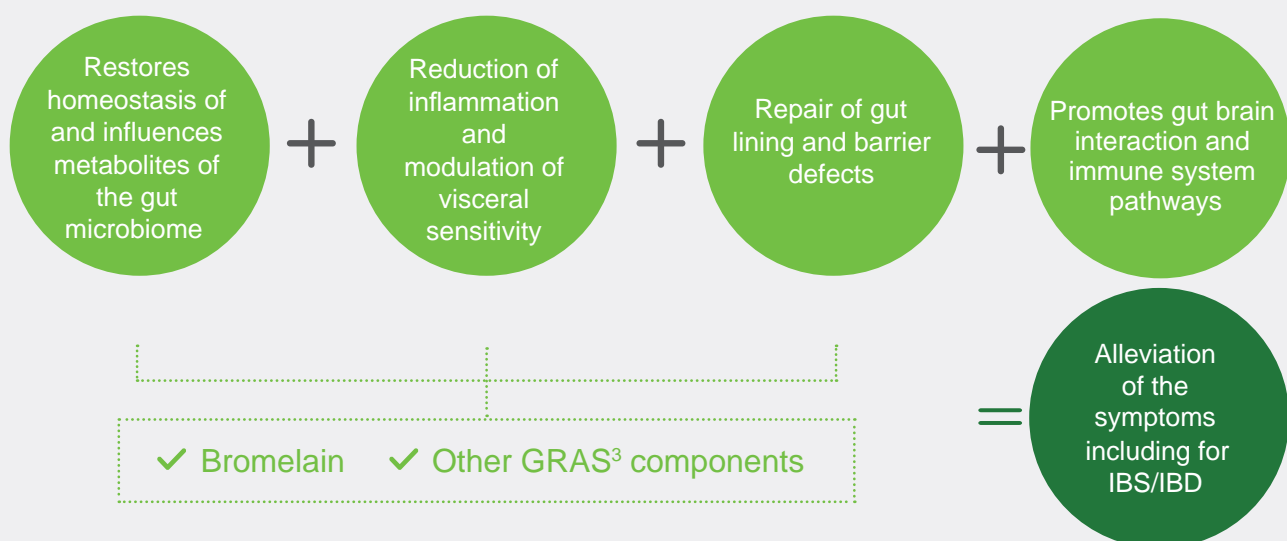
Human Health Focus

Anatara has developed a new product aimed at restoring and maintaining a healthy gut and microbiome, and managing the symptoms associated with gastrointestinal conditions such as Irritable Bowel Syndrome (IBS) and Inflammatory Bowel Disease (IBD).

Anatara's focus on this opportunity was based on market potential, competitive advantage, quality of supporting data, strength of intellectual property protection and speed to market.

How does it work?

GaRP is a microbiome targeted dietary supplement, aimed at:



³ GRAS = Generally Recognised As Safe - US FDA designation that a substance is considered safe for use in food



Market Opportunity

Irritable Bowel Syndrome (IBS)

Affects around **11%** of the global population⁴

~50% of patients⁵ turn to dietary supplements and complementary medicines

US\$25b GI and digestive health nutraceuticals market in 2016⁸

US\$36b / CAGR 8% By 2021⁸

IBS is the most commonly diagnosed gastrointestinal condition and a significant health care burden⁹

Inflammatory Bowel Disease (IBD)

>5 million sufferers globally⁶

30-50% of IBD patients⁷ turn to complementary and alternative medicines

Chronic Lifelong Disease

Affects women and men equally

Most commonly diagnosed in young adults⁶

15-35 years of age

IBD is a global disease with accelerating incidence in newly industrialised countries¹⁰

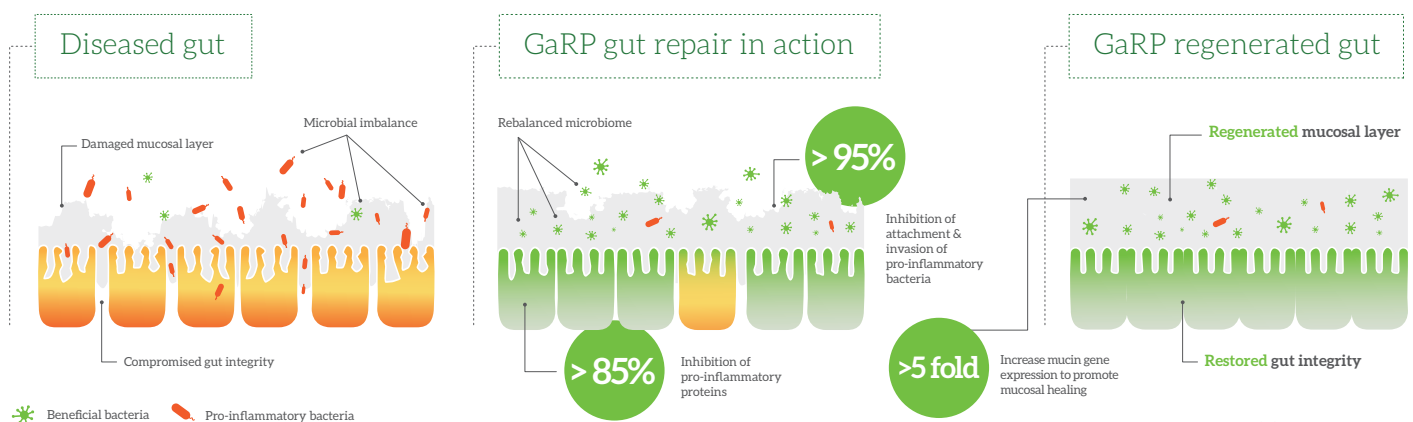
Successful Proof of Concept Studies



Potential breakthrough dietary product

- Anatara's proprietary GaRP formulation was efficacious* and:
 - ✓ Reduced production of pro-inflammatory proteins by gut and inflammatory cells by >85%;
 - ✓ Reduced the attachment and invasion of IBD and IBS pro-inflammatory bacteria into healthy gut cells by >95%;
 - ✓ Reduced the combined disease characteristics of colon inflammation and disrupted bowel habits by 2.5-fold ($p=0.012$) (compared to a placebo control)
 - ✓ Promoted mucosal healing by increasing mucin genes by a factor of to 7-fold (MUC2 and MUC6, $p<0.001$)
- * Demonstrated using industry standard *in vitro* gut and *in vivo* mouse models

Grounded in scientific evidence



⁴ Clinical Gastroenterology and Hepatology 2012; 10, 712-721, ⁵ World J. Gastroenterol 2014; 346-362, ⁶ Crohn's and Colitis Australia, ⁷ Gastroenterology 2017; 152:415-429,

⁸ Nutraceuticals: Global Markets, BCC, Research March 2017, ⁹ Clin Colon Rectal Surg. 2012 Mar; 25(1): 46-52, ¹⁰ Lancet. 2018 Dec 23;390(10114):2769-2778

Introducing 3FDC

(3 components with functional delivery coatings)

Complementary Medicine

A new formulation, 3FDC, was developed using GaRP technology. 3FDC has been designed so coated components are released in the large intestine (colon) to positively influence the gut-brain connection, targeting modulation of psychobiological processes driving anxiety-related disorders and to assist homeostasis of the “gut” to promote overall health and wellbeing. The formulation combines synergistic, generally regarded as safe (GRAS) ingredients.



Depression, Anxiety and Stress

A psychological functioning trial of 3FDC is anticipated to commence in late October 2021 in subjects with moderate levels of depression, anxiety, or stress symptoms indicated by the Depression, Anxiety and Stress Scale (DASS-21).

19%

19% of Americans have an anxiety disorder in any given year¹



38%

38.2% of the EU population met criteria for a psychiatric disorder received treatment for it²



- 24% of U.S. adults with a mental illness report an unmet need for treatment³
- 40% of Americans treat themselves with complementary and alternative medicines (CAM) without professional supervision, often without disclosing it to their psychiatrist or primary care provider⁴

¹ National Center for Complementary and Integrative Health: <https://www.nccih.nih.gov/health>, ² Wemrell M et. al. (2020) Issues in Mental Health Nursing, Volume 41: <https://doi.org/10.1080/01612840.2020.1744203> ³ Mental Health America: <https://www.mhanational.org/issues/state-mental-health-America>,

⁴ Mental Health America: https://www.mhanational.org/sites/default/files/MHA_CAM.pdf





Anatara Lifesciences Ltd (ASX:ANR) Summary

- Innovative, evidence-based products, backed by scientific and clinical studies for gastrointestinal and mental health
- Patentable multi-component, dual-targeted formulation
- GaRP complementary medicine seeks to target IBS and IBD
- 3FDC complementary medicine seeks to target depression, anxiety and stress
- Delivers the components where they can be most effective
- Board and management have significant human health deal experience

Advantages of Complementary Medicines:

- ✓ Fewer regulatory requirements than pharmaceuticals
- ✓ Lower development costs
- ✓ Lower development risk Faster time to market
- ✓ Rapid market penetration
- ✓ Are understood by the public and health professionals

Keep in
touch

Steven Lydeamore, CEO



@AnataraANR

slydeamore@anatara.com

www.anataralifesciences.com

Sign up for Email Alerts

<https://anataralifesciences.com/contact/email-alerts/>



ANATARA LIFESCIENCES

